



PROVISIONAL DATA ON OUR NEW BUILDINGS 1983

M.S. 'CAPE BRETON'

M.S. 'BARON DUNMORE'

M.S. 'CAPE WRATH'

OPERATED BY

SCOTTISH SHIP MANAGEMENT LTD.

SCOTTISH SHIP MANAGEMENT (Australia) PTY LTD
STANDARDS HOUSE, 80 ARTHUR ST,
NORTH SYDNEY, NSW
AUSTRALIA

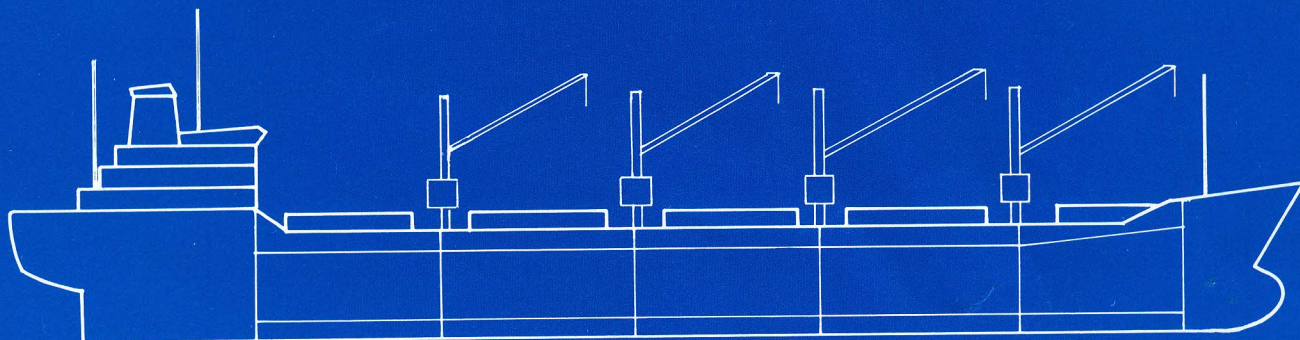
Phone 929 0233 Telex AA27398
Cables SCOTTISH SYDNEY NSW

SCOTTISH SHIP MANAGEMENT LTD
40 BUCHANAN ST,
GLASGOW G1 3JZ
U.K.

Phone 041-248 2333 Telex 776311
Cables MANAGEMENT GLASGOW

SCOTTISH SHIP MANAGEMENT (USA) INC.
MEAD HOUSE, 523 EAST PUTNAM AVE,
GREENWICH, CONNECTICUT 06830,
U.S.A.

Phone (203) 661 8100 Telex (230) 996522
Cables SCOTTISH GREENWICH CONN



GENERAL PARTICULARS

Building	Mitsui Shipbuilding & Engineering Co, Ltd, Tamano Yard, Japan.		
Class	Lloyd's Register +100A1, +LMC, UMS.		
Description	Single-deck, single screw bulk-carrier with machinery, accommodation and navigating bridge all aft. Strengthened for heavy cargoes. Numbers 2 and 4 holds may be empty. 4x25 tonne electro-hydraulic single-jib deck cranes serving 5 hold/hatches. Timber fitted.		
Dimensions	Length overall	Abt 182.8 m (599.73 ft)	Deadweight Abt 40600 mt on 11.00 m
	Length BP	174.0 m (570.86 ft)	Deadweight Abt 41850 mt on 11.25 m
	Breadth moulded	30.5 m (100.06 ft)	TPC on loaded draft 48.7 kt
	Depth moulded	15.75 m (51.67 ft)	
	Design draft	11.25 m (36.91 ft)	
Tonnages		Certificate	Panama
	GRT (Abt)	24,500 tons	To follow
	NRT (Abt)	18,000 tons	on completion
Main Machinery	Suez		
	To follow on completion		
Speed and Consumption	Mitsui B & W 6 cylinder, two-stroke, single-acting, crosshead, direct reversible, turbo-charged diesel engine type 6L67GBE		
	MCR 13,000 PS (metric) x 123 RPM. CSR 11,400 PS (metric) x 117.5 RPM.		
Cargo Gear	14.7 KTS fully loaded to 11.25 m mid draft at 11,400 PS (85% of MCR) Main engine burns 38 tons per day of fuel of 340 C/ST at 50°C at normal CSR. Generators burn 1 ton HFO plus 1.5 tons MDO per day at sea. Port consumption with four cranes working, approximately 2 tons MDO plus 2 tons HFO.		
	4x25 tonne SWL electro/hydraulic, single-jib cranes of 25 m jib radius at 25 deg. 4 sets electro-hydraulic grabs each 6.3 cubic metres.		
Official Numbers and Signal Letters	To follow on completion.		

CAPACITIES OF CARGO HOLDS					
Compartment	Grain		Bale		Maximum weight on Tank Tops
	Cub M	Cub Ft	Cub M	Cub Ft	
No 1	7,920	279,702	7,560	266,989	21.50 t/m ²
No 2	10,590	373,997	10,110	357,045	16.50 t/m ²
No 3	10,570	373,290	10,070	355,632	21.50 t/m ²
No 4	10,620	375,056	10,140	358,104	16.50 t/m ²
No 5	10,100	356,692	9,740	343,978	21.50 t/m ²
Total	49,800	1,758,737	47,620	1,681,748	—

DIMENSIONS OF HOLDS AND HATCHES					
Compartment	Length of Holds in Metres	Hatches		Height of Hatches Above	
		Length (m)	Breadth (m)	(Heavy Ballast) wl aft=7.82 m wl fwd=7.82 m	Keel in metres
No 1	23.75	13.60	15.60	10.73	18.55
No 2	27.20	16.80	15.60	10.78	18.60
No 3	27.20	16.80	15.60	10.78	18.60
No 4	27.20	16.80	15.60	10.78	18.60
No 5	26.40	16.80	15.60	10.78	18.60

Load line	Freeboard		Draft		Displacement	Dead-weight
	Metres	Feet	Metres	Feet		
TF F T S W Light ship	NOT AVAILABLE AT PRESENT DATA TO FOLLOW UPON COMPLETION.		11.25	36'10.9"		41,850

TIMBER				
Sockets and pad eyes fitted on main deck		Item	Capacity	
			Cub M	Cub Ft
Timber height at deck	6.125 m	9 layers	13,852	489,197
Timber height at hatch	4.100 m	(on deck)		
Across hatch lids	15.000 m	6 layers	5,168	182,513
Clear deck timber width (P+S)	9.800 m	(on hatches)		
Deck cargo (Total) = 8190 LT+910 LT. Absorption = 9100 LT.				

All Dimensions in Metres

CARGO GEAR

Cranes: 4x25T SWL Electric/Hydraulic

Hoist Speeds:

25 KT (Grab Operation) 20 M/min
10 KT 38 M/min
5 KT 54 M/min

Luffing time about 63 seconds
Slewing speed about 0.75 RPM

Grabs:

4 sets Electric Hydraulic
Capacity: each 6.3 cub m
Weight about 7.9 KT

